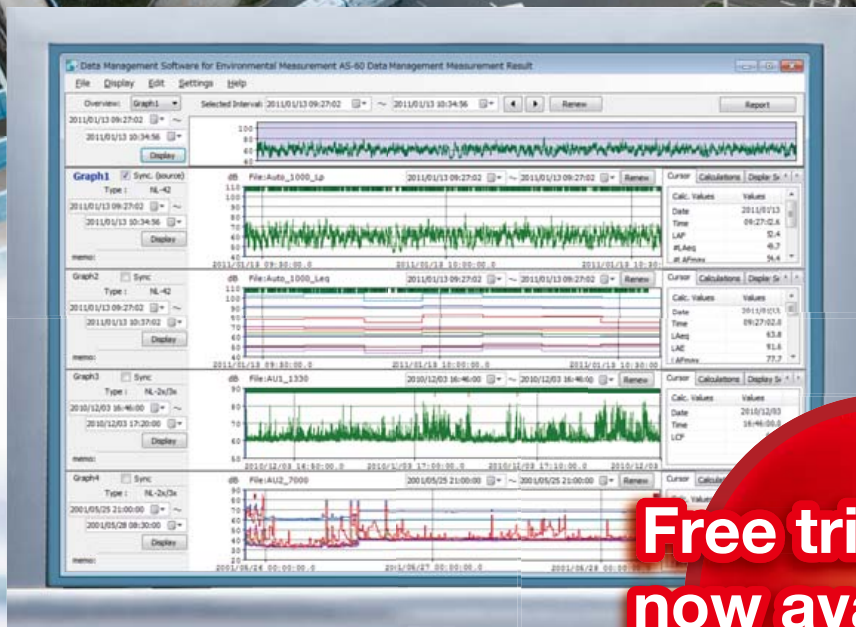




# Data Management Software for Environmental Measurement AS-60



**Free trial version  
now available on  
our website.**



# Comprehensive Software for Environmental Noise Measurement

The AS-60 software allows you to graphically display measurement data, perform calculation processing and excluded sounds processing, create reports, output files, and play real sounds.

**Easy to use**

**Simultaneously display multiple data items**  
(up to eight data items)

**Data combination**

**Quick and easy report creation**

**Data stored in a data recorder can also be loaded**  
(CSV files saved by the DA-40 Viewer)

## Easy to use

**Drag-and-drop**

**Simply drag-and-drop to read and display data**

**Displays a list of options for the next operation**

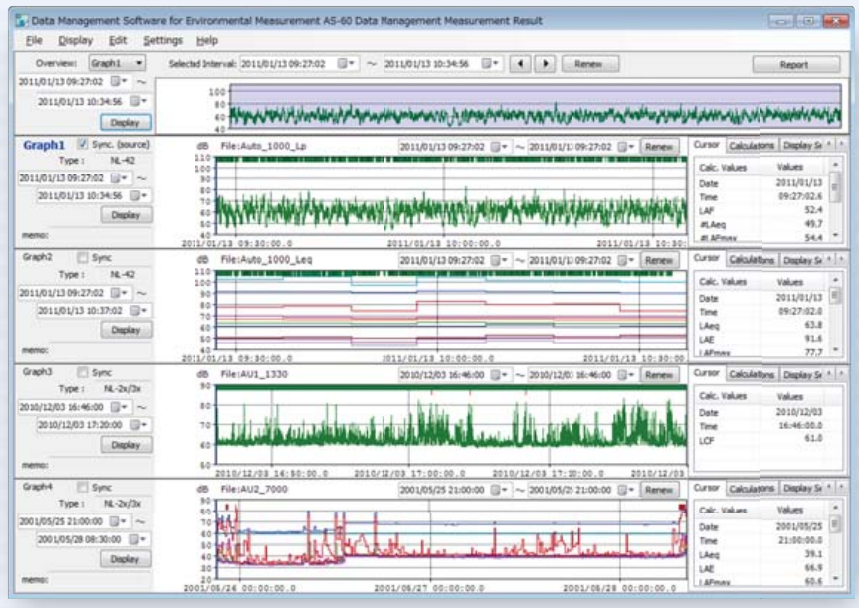
**Single click to play wave files**

**Copies the calculations results to the clipboard**

## Simultaneously display and edit multiple data items

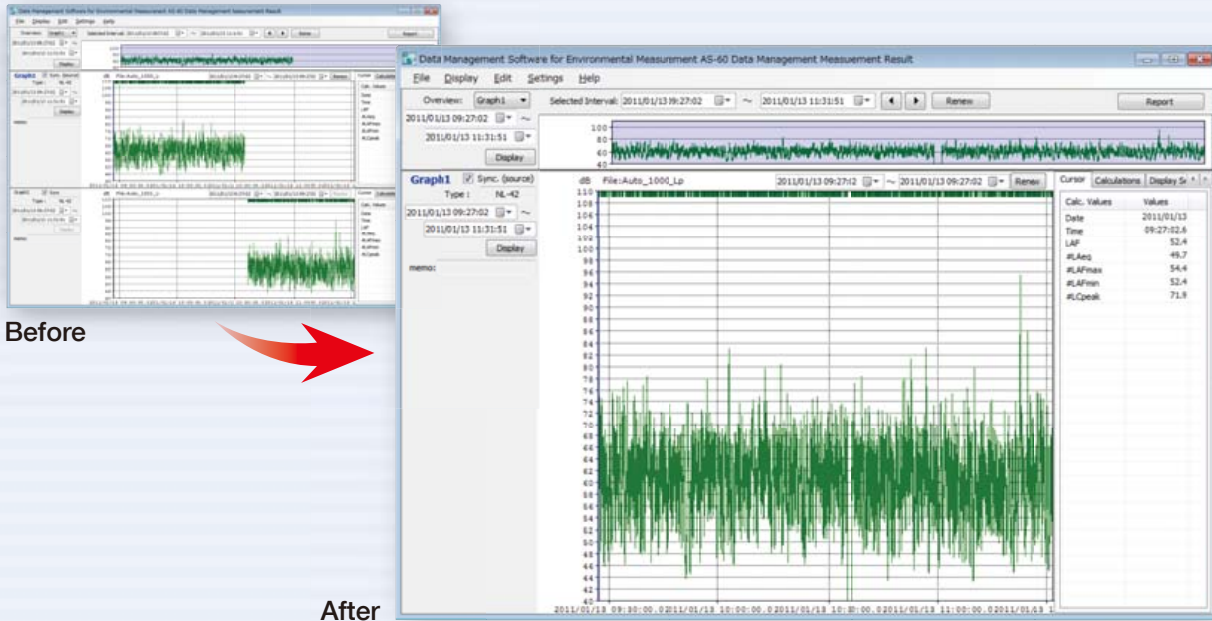
- Simultaneously display and edit data measured at multiple sites\*
- Data measured by each sound level meter in  $L_p$  mode (Auto1) and  $L_{eq}$  mode (Auto2) is displayed simultaneously.

\* Up to eight data items can be loaded simultaneously, and the graphs for up to four data items can be displayed simultaneously.



## Data combination

- This function allows you to combine multiple items of measurement data that were divided during a battery change, or some other reason. The combined data can be displayed and edited as a single file (only data saved by NL-42/52).



## Report Creation

- Easy creation of reports such as daily logs
- Allows you to print collected data and output to an Excel file or text file.

Data output as an Excel file

Printing a report

Project: AS-60Project\_NL-52\_1000H

Team Report: Daily Report

Auto\_0112\_LP (Auto\_0112\_LP)

Data Interval: 2011/01/12 12:00 ~ 2011/01/12 04:00

Display Interval: 2011/01/13 ~ 2011/01/14

Calculations: Hour average

Start	LAnq	LAE	LAFmax	LAFmin	LS	LSD	LSP	LSS	Over	Under	Excluded personal
2011/01/13 07:00:00	39.8	75.1	85.7	33.9	41.3	36.7	37.9	34.6	-	-	-
2011/01/13 08:00:00	36.2	85.8	72.8	37.4	54.3	51.8	46.3	38.9	38.4	-	-
2011/01/13 09:00:00	34.4	89.9	82.7	44.9	37.3	35.8	30.2	41.1	46.8	-	-
2011/01/13 10:00:00	31.9	86.8	73.1	44.7	35.9	32.7	48.4	46.3	45.8	-	-
2011/01/13 11:00:00	31.6	87.2	75.1	44.9	35.8	33.5	48.4	46.4	46.1	-	-
2011/01/13 12:00:00	31.9	87.5	75.1	44.7	35.9	32.7	48.4	46.3	45.8	-	-

Daily Report (1 hour average)

Project: AS-60Project\_NL-52\_1000H

Time: 2011/01/13 07:00:00 ~ 2011/01/14 07:00:00

Printed on: 2011/03/06 14:48:18

File: Auto\_0112\_LP

Type: NL-52 Serial No: 98765432 Index: 1 Measurement Mode: LP

Log Date: Time: Instrumental: 10 m Lp Store Interval: 1 s Four Auto Interval: -

Measurement Location: RION Entrance Gate

Operator: \*\*\*

Weather Conditions: Sunny

1 Hour Average	Start	LAnq	LAE	LAFmax	LAFmin	LS	LSD	LSP	LSS	Over	Under	Excluded personal
2011/01/13 07:00:00	2011/01/13 07:00:00	39.8	75.1	85.7	33.9	41.3	36.7	37.9	34.6	-	-	-
2011/01/13 08:00:00	2011/01/13 08:00:00	36.2	85.8	72.8	37.4	54.3	51.8	46.3	38.9	38.4	-	-
2011/01/13 09:00:00	2011/01/13 09:00:00	34.4	89.9	82.7	44.9	37.3	35.8	30.2	41.1	46.8	-	-
2011/01/13 10:00:00	2011/01/13 10:00:00	31.9	86.8	73.1	44.7	35.9	32.7	48.4	46.3	45.8	-	-
2011/01/13 11:00:00	2011/01/13 11:00:00	31.6	87.2	75.1	44.9	35.8	33.5	48.4	46.4	46.1	-	-
2011/01/13 12:00:00	2011/01/13 12:00:00	31.9	87.5	75.1	44.7	35.9	32.7	48.4	46.3	45.8	-	-

## Data Management Software for Environmental Measurement

(Includes the octave and 1/3 octave data management software)  
**AS-60RT**

Adds support for handling octave band analysis data to AS-60

- Allows using a computer to program for 1/3 octave analysis SX-A1RT (RIONOTE option), manage data measured with octave band and 1/3 octave band real-time analysis program NX-62RT (NL-62 option), NX-42RT (NL-42/52 option) or High-Precision Sound Level Meter NA-28 (with 1/3 octave band analysis function)
- Auto stored data and real sound files can be loaded, allowing graph display and various processing operations of octave band analysis results
- All-pass values can also be used for creating reports

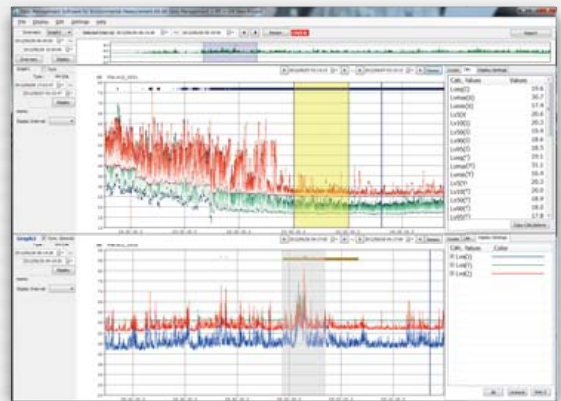


## Data Management Software for Environmental Measurement

(Includes the vibration level data management software)  
**AS-60VM**

Adds support for handling data measured with vibration level meter to AS-60

- Allows using a computer to manage auto store data measured with vibration level meter
- The measurement data can be displayed as Time-Level graph. Simultaneous display of multiple channels and graph overlay also possible
- Various calculation functions and report creation supported

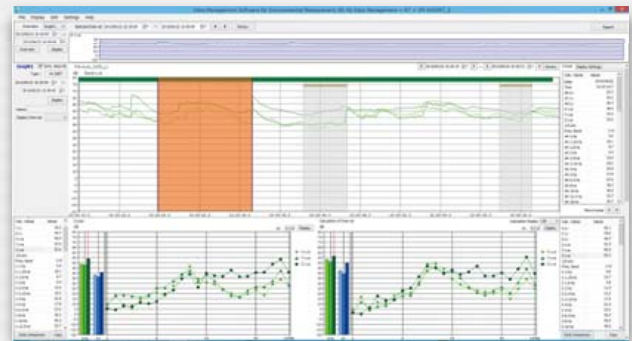


## Data Management Software for Environmental Measurement

(Includes the 1/3 octave data and vibration level data management software)  
**AS-60VMRT**

Adds support for handling data measured with VM-55+VX-55RT+VX55RT to AS-60

- Auto stored 1/3 octave band data can be loaded, allowing graph display and various processing operations of 1/3 octave band analysis results and report creation.



### Supported models

(Only auto store data are supported, excl. DA-40 Viewer)

Software	AS-60	AS-60RT	AS-60VM	AS-60VMRT
Hard ware				
NL-42*1/52*1/62	●	●	●	●
NL-32/31/22/21	●	●	●	●
DA-40 Viewer	●			
SX-A1RT		●		●
NX-62RT		●		●
NX-42RT		●		●
NA-28		●		●
VM-55*2			●	●
VM-53A			●	●
VX-55RT				●

\*The NX-42EX is also needed. \*The VM-55EX is also needed.

### Recommended computer specifications

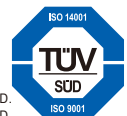
(Common for AS-60/60RT/60VM)

CPU	Intel Core™2 Duo 2.0 GHz or higher
RAM	2 GB or more
DISPLAY	XGA (1 024 x 768) or more, at least 65 536 colors
OS	Microsoft Windows 7 Professional 32 bit and 64 bit, 8.1 Pro 64 bit, 10 Pro 64 bit

\* If AS-60/60RT/60VM is used for the NL-52/42, the NX-42EX is also needed.



RIION Co., Ltd. is recognized by the JCSS which uses ISO/IEC 17025 (JIS Q 17025) as an accreditation standard and bases its accreditation scheme on ISO/IEC 17011. JCSS is operated by the accreditation body (IA Japan) which is a signatory to the Asia Pacific Laboratory Accreditation Cooperation (APLAC) as well as the International Laboratory Accreditation Cooperation (ILAC). The Quality & Environmental Management system Center of RIION Co., Ltd. is an international MRA compliant JCSS operator with the accreditation number JCSS 0197.



ISO 14001 RIION CO., LTD.  
ISO 9001 RIION CO., LTD.

\* Windows is a trademark of Microsoft Corporation. \* Specifications subject to change without notice.

Distributed by:



3-20-41, Higashimotomachi, Kokubunji, Tokyo 185-8533, Japan  
 Tel: +81-42-359-7888 Fax: +81-42-359-7442

This product is environment-friendly. It does not include toxic chemicals on our policy.  
 This leaflet is printed with environmentally friendly UV ink.